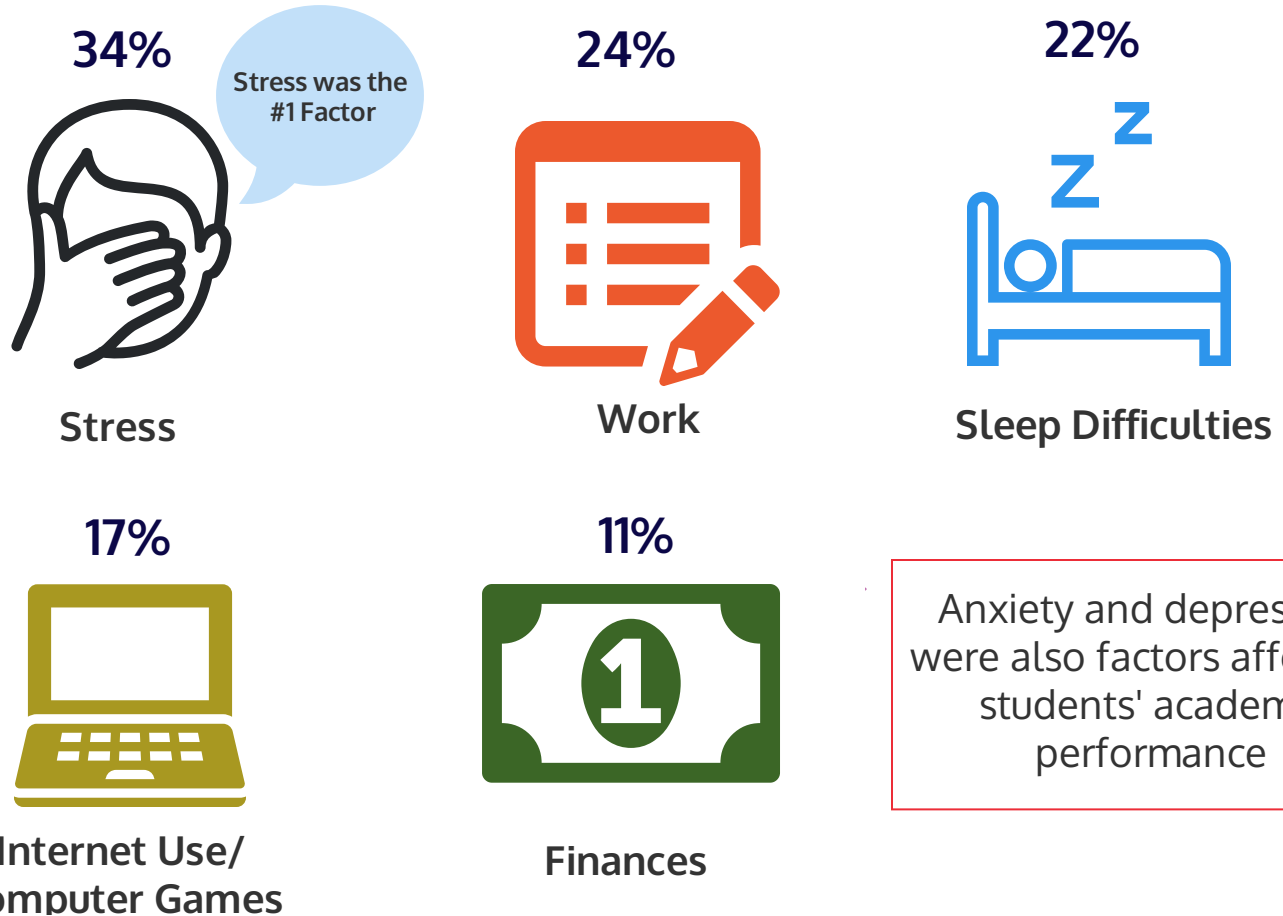


Understanding Barriers to Academic Success at Ohlone College

Source: American College Health Association-National College Health Assessment, Ohlone College, Sample Size=607

Factors Impacting Student Academic Performance

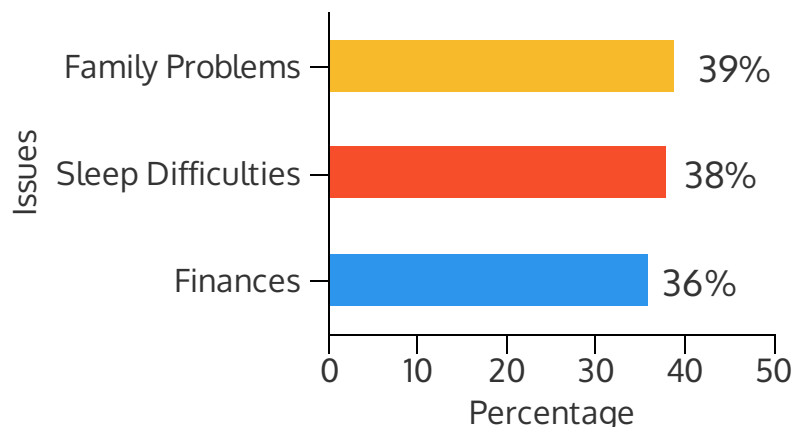


Traumatic or Very Difficult Issues to handle

Students were asked to report on the issues they found traumatic or very difficult to handle in the past 12 months.



52% of students surveyed reported academics as a traumatic or very difficult issue to handle.



Resources for Support

- Alameda County Crisis Support Line: 1-800-309-2131
- National Suicide Prevention Lifeline: 1-800-273-8255

